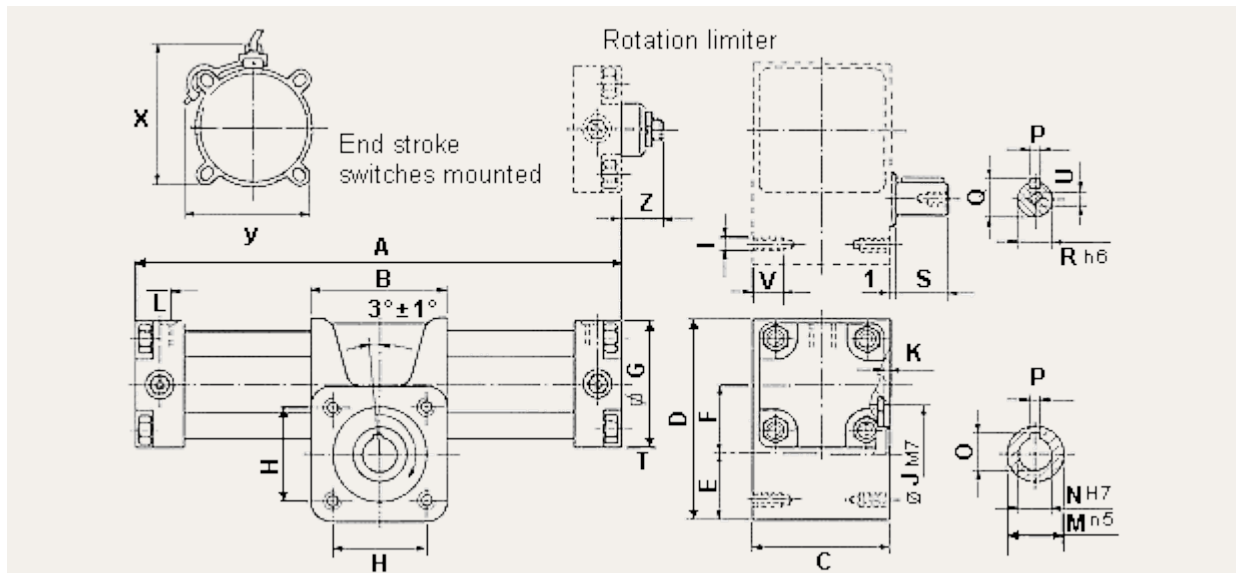


SPECIFICATIONS

| | | |
|---|---|--------|
| Cylinder bore sizes (mm): | 100 | 125 |
| Theoric torque at 6 bar (Nm): | 177 | 276 |
| Port sizes: | G 1/2" | G 1/2" |
| Max. load shaft(N) axial: | 2500 | 2500 |
| radial: | 2000 | 2000 |
| Max. rated inertia (kgm ²): | 0,3 | 0,4 |
| Cushion angle: | 30° | 30° |
| Rotation angles (+/-1°): | $\alpha = 96^\circ-186^\circ-366^\circ$ | |
| Backlash: | 1° | |
| Fluid: | compressed air, lubricated or not | |
| Working pressure (bar): | 0,3 ÷ 10 | |
| Working temperature: | -10°C ÷ +60°C | |
| Mounting form: | central, axial on both sides | |
| Shaft: | male (single side) or hollow, with key | |



| mm. | A | B | C | D | E | F | G | H | I | J | K | L | M | N | O | P | Q | R | S | U | V | Z | X | Y | W* |
|-----|------------------------|-----|-----|-----|----|------------------|------------|----|-----|----|-----|-------|----|----|------------------|----|------------------|----|----|--------|----|----|-----|-----|----|
| 100 | 304+1.309 _α | 130 | 142 | 188 | 64 | 53. ⁵ | 115 140 | 90 | M14 | 90 | 4.5 | G1/2" | 55 | 35 | 38. ⁷ | 10 | 38. ⁵ | 35 | 50 | M12x20 | 24 | 38 | 122 | 118 | 4 |
| 125 | | | | | | | | | | | | | | | | | | | | | | | 146 | 143 | |

* To be added to A for one side magnetic cylinders (two times for double side).

Contact us today:

Authorized US Distributor
Torque Technologies, Inc.

P.O. Box 25008
Sarasota, FL 34277-2008

Phone: 941-358-9447

Fax: 941-358-9647

E-mail: sales@gpa-tech.com